



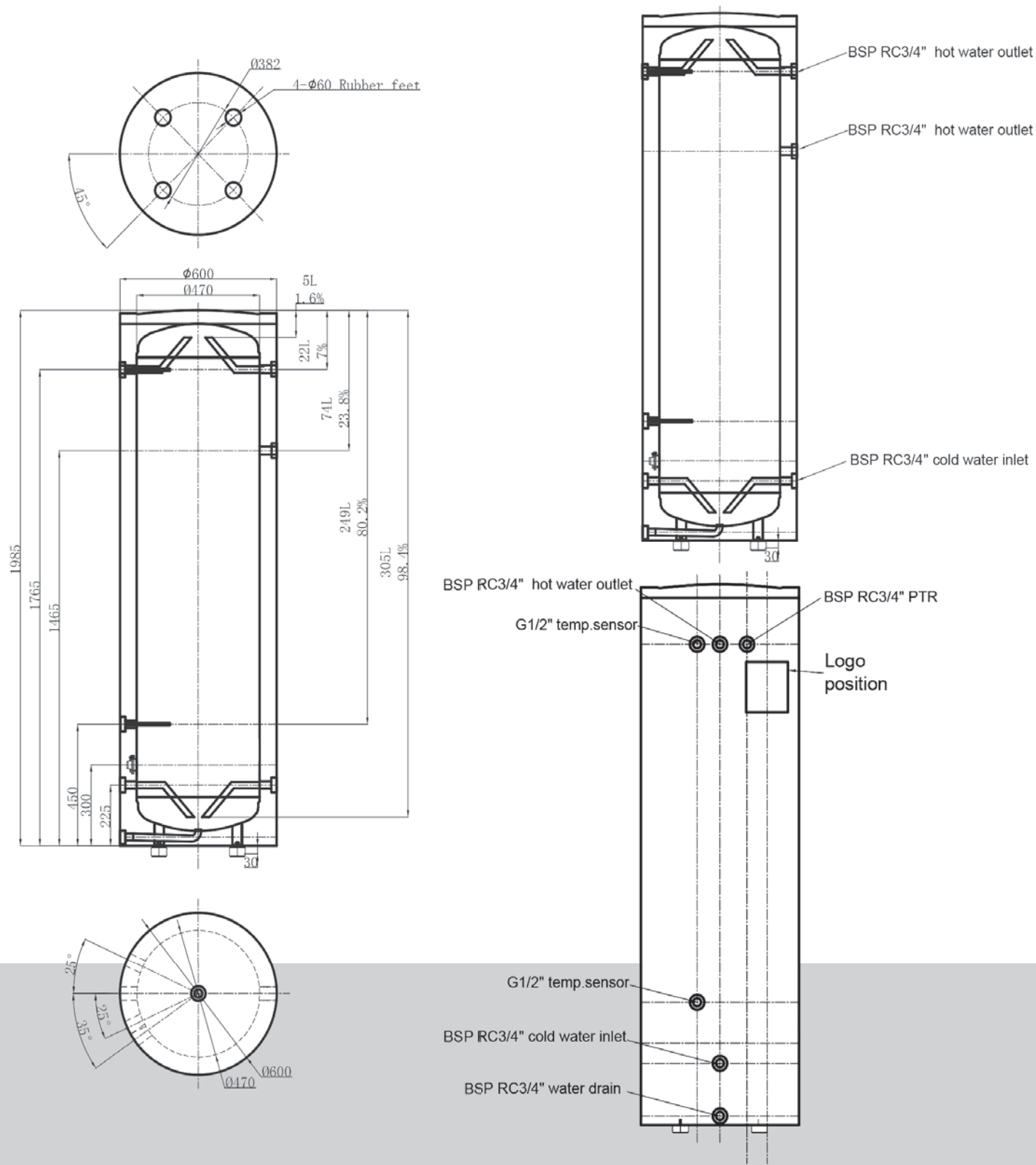
DUPLEX TANK SPECIFICATIONS

CO2 HEAT PUMP HOT WATER SYSTEM WITH
315L DUPLEX STAINLESS STEEL TANK



RECLAIM
ENERGY

DIMENSIONS



DOUBLE THE STRENGTH BUILT TO LAST



DUPLEX STAINLESS STEEL TANKS

Strength and durability,
built to last.



20+ YEARS OF INNOVATION

Trusted sustainable hot water expertise.



RECLAIM ENERGY CO₂ HEAT PUMP

Efficient. Reliable.
Proven performance.



PROUDLY AUSTRALIAN

Designed by renewable energy leaders.



TECHNICAL SPECIFICATIONS

SYSTEM CODES:	REHP-CO2-315DX-V2 REHP-KY-CO2-315DX
TANK ID:	RE-DXO-315
TANK CAPACITY:	315L
TANK SIZE:	600mm x 1985mm
WORKING PRESSURE:	700kPa
CONNECTIONS:	BSP RC ¾"




NET WEIGHT:	65kg
MAXIMUM WATER TEMP:	90°C
DIAMETER INNER TANK:	470mm
DIAMETER OUTER TANK:	600mm
TANK OUTER CASING:	Duplex Stainless Steel
TANK INNER:	2205 Duplex Stainless Steel
FOAM INSULATION:	65mm Polyurethane



CONTACT US &
FIND OUT MORE
HERE



1300 383 815
HELLO@RECLAIMENERGY.COM.AU
RECLAIMENERGY.COM.AU

facebook.com/CO2HeatPump 
instagram.com/reclaimenergy 
linkedin.com/company/reclaim-energy 



RECLAIM
ENERGY